

# SCOPIA PathFinder Firewall & NAT Solution



SCOPIA PathFinder Offers Both a Near-end (Enterprise Network) and Far-end (Remote Site) Solution



## Works with Any Firewall, Endpoint and Gatekeeper

Solves near-end and far-end firewall issues allowing you to maintain existing security measures with no changes to existing firewalls. All H.323 standards-based endpoints and Gatekeepers are supported. Retains all RADVISION ECS Gatekeeper features: enhanced dial plan, hierarchy, conference hunting, CDR records and API for integration.



## Easily Deployed

In the DMZ while the Pathfinder client can be installed on any standalone computer in the network. Simply continue using your existing firewall, Gatekeeper, and video conferencing endpoints. No changes in dial plans or E.164 numbers required.



## Secure

Hardened Linux operating system, client with built-in access control to prevent attacks by malicious devices, AES encryption and client authentication provide intensive security and peace of mind for the administrator.



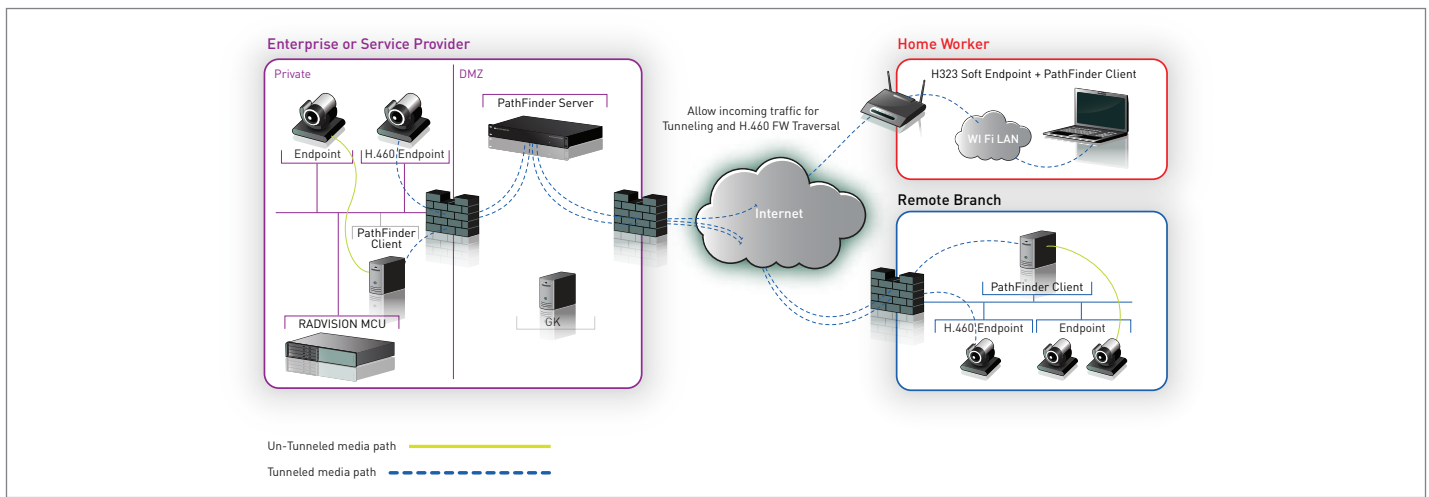
## Scalable and Distributed

A single Pathfinder client deployed can support many individual endpoints. Pathfinder servers can be neighbored for additional capacity and backup. Clients hunt backup servers in the event the primary server is unavailable.



## H.460 Compliant

Providing the latest in video conferencing firewall traversal technology.



SCOPIA PathFinder Typical Deployment - Server is in the Enterprise DMZ, Client in Every Remote Site

## SCOPIA PathFinder Features

### SCOPIA PathFinder Server

- Secured – hardened Linux platform (RADVISION customized)
- Closed 1U chassis
- Server neighboring for large enterprises and scalability

### Management

- Web interface for easy management
- Role based user management for user and client definition
- Monitor all connected clients
- View client details, registered endpoints and active calls
- Connect and disconnect clients
- Multi-level configurable call logging
- Configurable tunneling port for administrator flexibility

### iVIEW Additional Management Features

- Centralized management of video conferencing infrastructure
- Real-time monitoring
- Enhanced problem ticket handling with real-time alarm notifications
- Centralized log collection

### SCOPIA PathFinder Client

- Software, deployed on any computer in the remote site
- Available for Windows / Linux
- One client serves many endpoints
- Can be deployed together with software endpoints
- Multiple server failover options
- Security mechanism for the administrator to define which devices are accessible via the client
- Supports any H.323 endpoint
- Can be embedded in the endpoint (project based)
- Client Authentication – each client uses a dedicated password managed by the server

## SCOPIA PathFinder Product Specifications

### Functionality

- Up to 80 concurrent calls
- Up to 480 registered devices
- H.460.18/.19 compliant including support for multiplexed media
- AES encryption for call privacy
- Both near-end (enterprise firewall/NAT) and far-end (remote site) firewall traversal
- Handles firewall and NAT problems without device upgrade or security compromise
- Full dial plan support
- Enterprise Gatekeeper support – allows deploying a local Gatekeeper in the remote site
- Easy to implement and deploy
- Suitable for service providers and enterprises

### Client Requirements

- Microsoft Windows 2000 Professional / 2000 Server / 2003 Server / 2008 Server / Windows XP / Windows Vista / Red Hat 9.0 desktop version, Red Hat Enterprise Linux ES release 4
- Intel Pentium IV, 2 GHz or higher processor
- 256 MB RAM
- 50 MB hard disk space

### External Interfaces

- Dual Gigabit NICs (rear)
- 1 x DB9 serial port connector (rear)
- 4 x USB 2.0 connectors (rear)

### PathFinder Chassis

- Height: 43mm (1.7"); Width: 430mm (16.9"); Depth: 508mm (20")
- 19-inch rack-mountable with flanges
- 100-240 VAC, 50/60Hz auto switched

### Environmental Requirements

- Operating temperature: 10° to 35°C (50° to 95°F)
- Storage temperature: -40° to 65°C (-40° to 149°F)
- Relative storage humidity: 90% relative humidity, non-condensing at 35°C (95°F)

## About RADVISION

RADVISION (Nasdaq: RVSN) is the industry's leading provider of market-proven products and technologies for unified visual communications over IP and 3G networks. With its complete set of standards-based video communications solutions and developer toolkits for voice, video, data and wireless communications, RADVISION is driving the unified communications evolution by combining the power of video, voice, data and wireless – for high definition video conferencing systems, innovative converged mobile services, and highly scalable video-enabled desktop platforms on IP, 3G and emerging next-generation networks. For more information about RADVISION, visit [www.radvision.com](http://www.radvision.com)

USA/Americas  
T +1 201 689 6300  
F +1 201 689 6301  
[infoUSA@radvision.com](mailto:infoUSA@radvision.com)

EMEA  
T +44 20 3178 8685  
F +44 20 3178 5717  
[infoUK@radvision.com](mailto:infoUK@radvision.com)

APAC  
T +852 3472 4388  
F +852 2801 4071  
[infoAPAC@radvision.com](mailto:infoAPAC@radvision.com)